



Locking Accessories



Southern Folger

For More information please call 210-123-4567



Accessories

Locking Accessories



201040 Latch Keeper Switch

For use with RRBLs door mounted, key operated mortise lock models 1040, 1060 and 1070 to indicate engagement of the latch in the keeper. It is recommended that the 201040 be interconnected with an RRBLs door position switch to reduce the possibility of a false reading of latch engagement with a door ajar. (Note: Open door hand manipulation of the 201040 actuator paddle is an unavoidable possibility.) All parts of the 201040 are of stainless steel stampings. The switch (form C) rating is 10 amps @ 250VAC. When ordering, advise mating lock model (i.e. 1040/1060 or 1070).

201010 Tapered Housing Pushbutton Switch

The 201010 pushbutton assembly mounts in the door frame lock pocket opposite the key cylinder. Since there are no exposed fasteners, it is irremovable from the exterior. The 201010 was designed originally for use in a correctional facility as an inmate cell door unlock/guard call switch, in conjunction with an RRBLs electromechanical lock. However, it is applicable wherever its unique mounting can be utilized to provide tamper resistance. The switch has an encapsulated DPDT configuration with a rating of 6 amps @ 120VAC and 4 amps @ 24VDC. The wire leads are furnished with quick disconnect plugs. Standard switch holder finishes are ANSI 606 (US4) and ANSI 626 (US26D).

Wood Door Strike Reinforcement

A strike reinforcement is recommended when an RRBLs jamb mounted electromechanical lock is used with a solid core wood door. This door edge mortise, wrap-around design provides a rigid metal mounting for the lock strike plate. It enhances the strength of the wood door locking assembly as compared to direct screw attachment of the strike. The standard unit is 24" long and fabricated from stainless steel for either a 1-3/4" or 2" thick door (specify). Custom made lengths are available as specified.

201044 Recessed Pushbutton Switch

The 201044 pushbutton assembly is identical to the No. 201010 except that it recess mounts into the frame. *Note: The frame supplier must provide an internal welded-in-place mounting plate (see schematic illustration over).*

201028 Surface Mounted Pushbutton Switch

The 201028 pushbutton assembly is identical to the No. 201010 except that it surface mounts with exposed fasteners, ordinarily on the exterior trim of a door frame. When ordering, specify Phillips or pinned Torx head mounting plate screws.

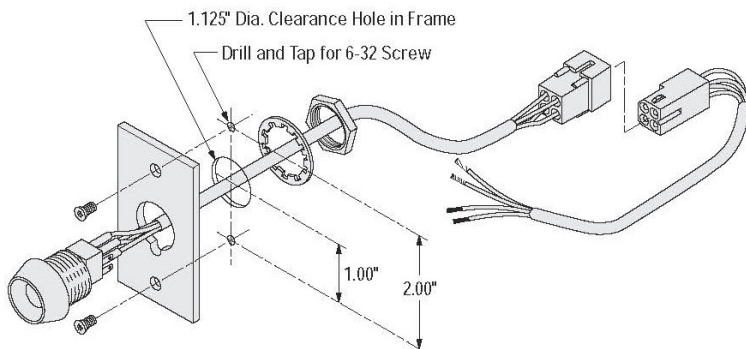


For More information please call 210-123-4567

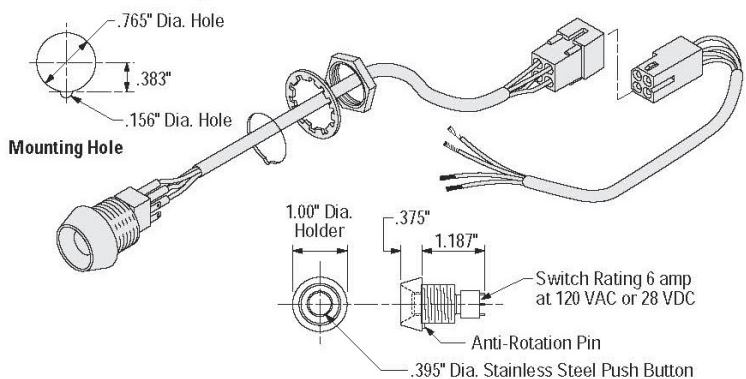
Accessories

Locking Accessories

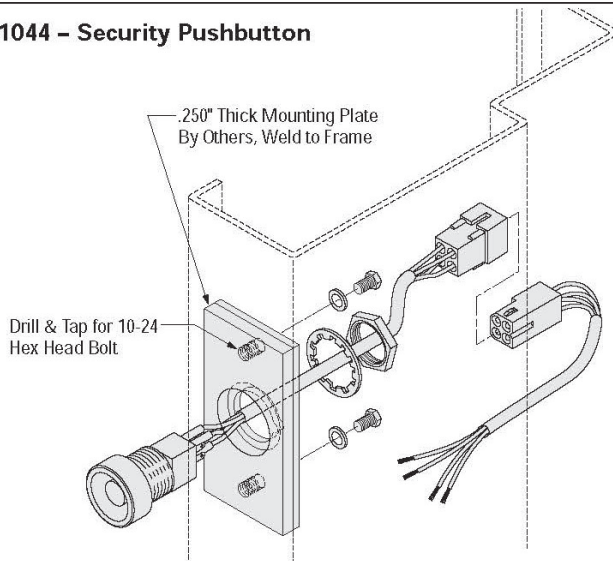
201028 – Surface Applied Pushbutton



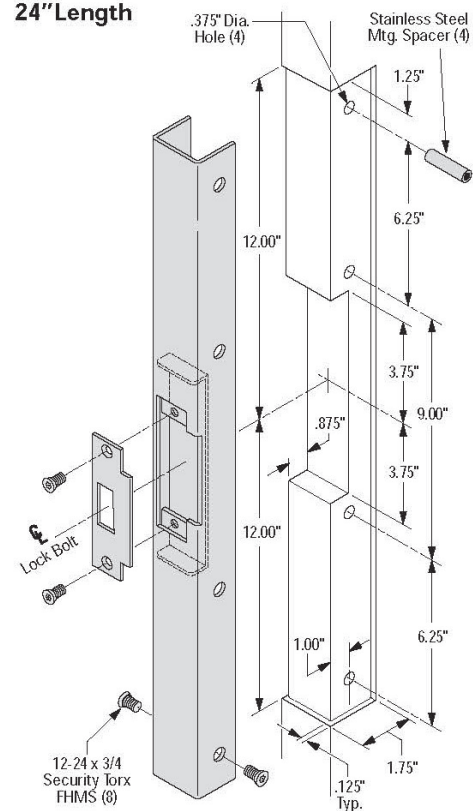
201010 – Security Pushbutton



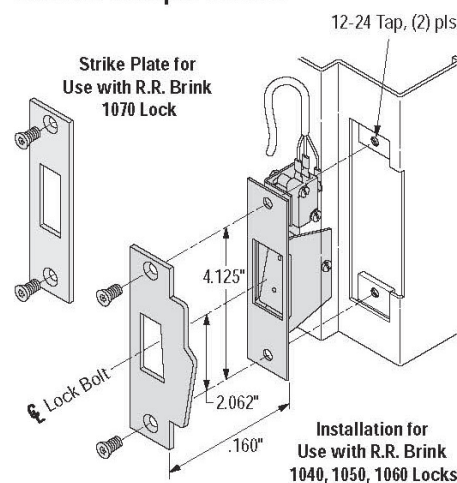
201044 – Security Pushbutton



Wood Door Strike Reinforcement 24" Length



201040 – Keeper Switch



Note:

1. Consult factory for complete frame preparation on all locking accessories. Do not use the above drawings for construction.

For More information please call 210-123-4567

